

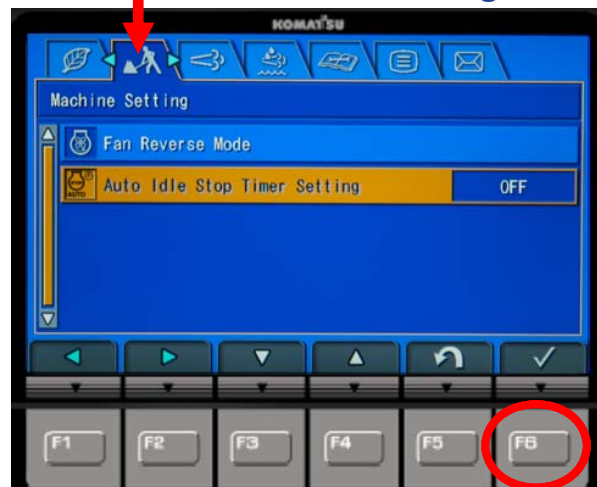
TIP OF THE WEEK

MODEL ...D61/D61i-24, D65/65i-18, D85-18, D155/155i-8
 FEATUREAUTO IDLE SHUTDOWN
 STD / OPTSTANDARD
 SUGGESTED SETTINGOPERATION DEPENDENT

The auto idle shutdown function stops the engine automatically when the engine is idling for an extended period with the travel/park brake and work equipment levers in the lock position.

To save fuel and reduce overall owning and operating costs, the auto idle timer can be set to shut down the engine. The timer can be set from 5 to 60 minutes, or turned OFF.

Press F6 and toggle to the Machine Setting tab



Set timer to stop the engine from 5 to 60 minutes, or OFF



- 30 seconds before engine shut down, the monitor screen displays a count-down timer.
- To stop the count-down, move one of the lock levers to the "unlock" position.
- When the engine is stopped, all switched ON electrical components continue to run.

Conditions for auto-idle shutdown:

- ✓ Travel/park brake and work equipment levers in locked (down) position
- ✓ Throttle dial at low idle (cannot be one click above)
- ✓ Engine at operating temperature and no need for the cooling fan
- ✓ No KDPF regeneration occurring
- ✓ No DEF thawing occurring

For additional information, please consult the Product Bulletin, Operator's Manual or Shop Manual. Photos may include optional equipment.

