

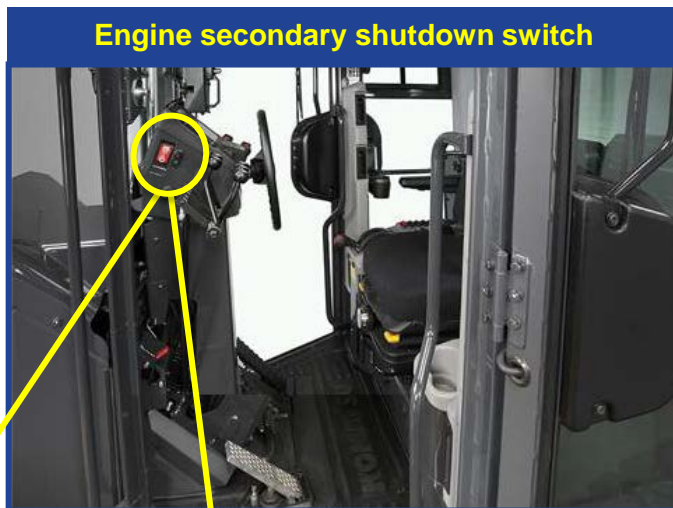
TIP OF THE WEEK

MODEL GD655-6
 FEATURE Engine Secondary Shutdown Switch
 STD / OPT Standard

All Komatsu machines with Tier 4 engines have an engine secondary shutdown switch. This switch provides an alternate way of shutting down the engine if the engine cannot be shutdown with the ignition switch. For GD655-6 machines, this switch is located inside the cab, on the LH side of the front control console, for easy access.

To operate the engine secondary shutdown switch, the protective cover must be raised. Flipping the switch to the up position shuts down the engine and also prevents it from starting, as long as the switch remains up. Closing the cover automatically returns the switch to the normal operating position.

Use the engine secondary shutdown switch only in case of an emergency. Under normal operating conditions, the ignition switch is the primary way to shut down the engine.



Engine secondary shutdown switch



Normal operating position



Switch in engine shut down position

For additional information, please consult the Product Bulletin, Operator's Manual or Shop Manual. Photos may include optional equipment.

KTIP2016-39 Rev. 1/16

© 2016 Komatsu America Corp. All rights reserved.



Komatsu® is a registered trademark of Komatsu Ltd.